

HD55N4



DIGGING DEPTH

12'8"

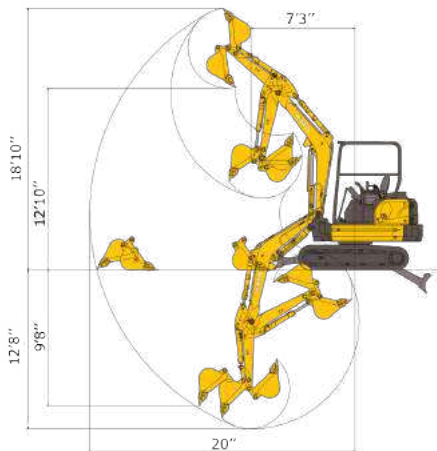
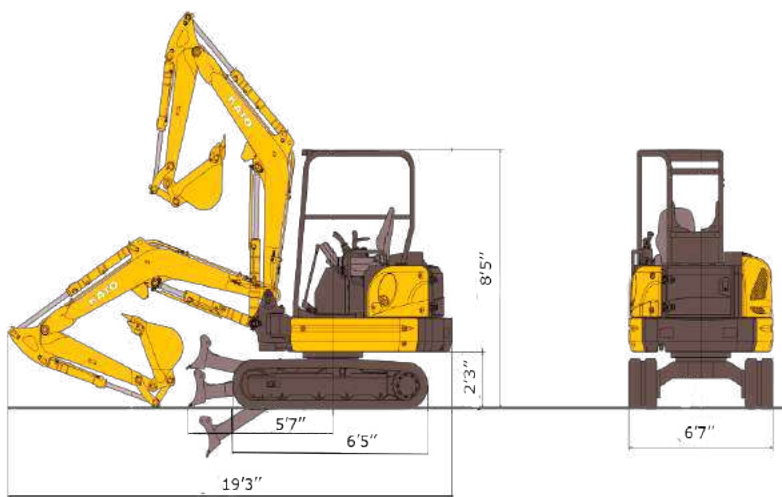
OUTPUT RATING

63.8HP

OPERATING WEIGHT

12,733 LBS

KATO



HD55N4

Working Ranges

A.	Max. digging radius	20'
B.	Max. digging depth	12'8"
C.	Max. digging height	18'10"
D.	Max. dumping height	12'10"
E.	Max. vertical digging depth	9'8"
F.	Min. front turning radius	7'3"
G.	At Right Boom Swing	5'10"

HD!
HD55N4

MODEL	HD55N4
Performance	
Bucket Capacity	5 ft ³
Bucket Width	24"
Operating Weight	12,733 lbs
Transportation Weight	11,795 lbs
Maximum Swing Speed	9 rpm
Travel Speed (low/high)	1.6/2.8 mph
Gradeability	30°
Ground Pressure	4.79 psi
Max Bucket Digging Force	11,071 lbs
Engine	
Model	YANMAR-4TNV98C
Rated Output	63.8 hp
Fuel Tank Capacity	25.1 gal
Boom Swing System	
Type	Boom Offset with Hydraulic Cylinder
Swing Angle (L / R)	50° / 90°
Hydraulic System	
Total Hydraulic system Flow	46 gpm
Max Auxiliary Hyd. Flow	29.2 gpm
Dozer Blade	
Size	14.5" / 6'7"
Lift Above ground / Drop Below Ground	14" / 16.5"

KATO

EXCAVATORS AND TRACK LOADERS

www.KATOCES.com

400 Production Court

Elizabethtown, KY 42701

(800) 538-1447 | Fax: (270) 737-0419