

HD85V5



DIGGING DEPTH

14'2"

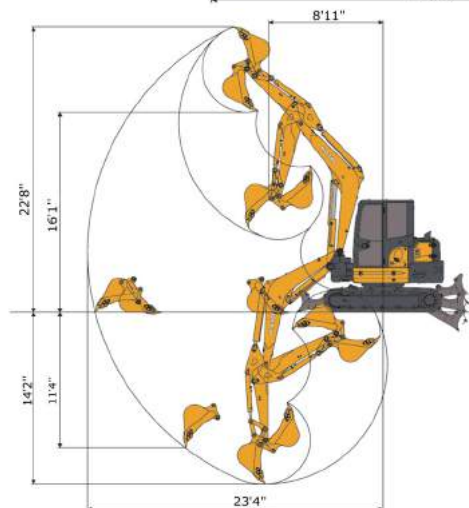
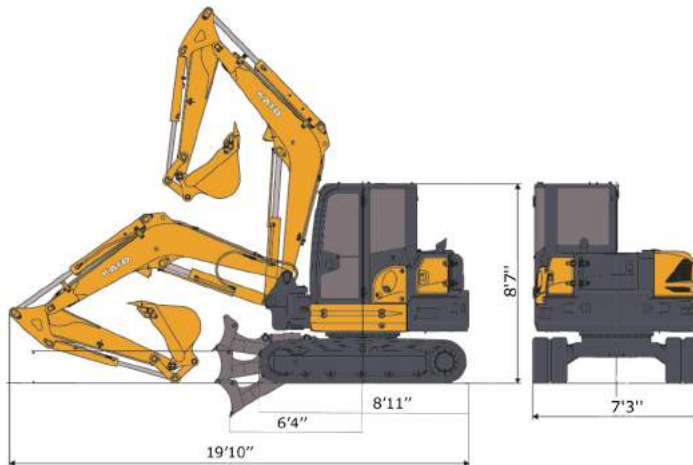
OUTPUT RATING

57HP

OPERATIONG WEIGHT

19,595LBS

KATO



85V5

Working Ranges

A.	Max digging radius	23'4"
B.	Max digging depth	14'2"
C.	Max vertical dig depth	11'4"
D.	Max dumping height	16'1"
E.	Max digging height	22'8"
F.	Min. front-turn radius	8'11"
G.	At right boom swing	7'4"

HD85V5

MODEL	HD85V5
Performance	
Bucket Capacity	8.8 ft ³
Bucket Width	30"
Operating Weight	19,595 lbs.
Transportation Weight	18,673 lbs.
Swing Speed	9 rpm
Travel Speed (low/high)	1.6 / 2.7 mph
Gradeability	30°
Ground Pressure	4.5 psi
Max Bucket Digging Force	12, 364 lbs.
Engine	
Model	YANMAR 4TNV98C
Rated output	57.26 hp
Fuel Tank Capacity	29 gal
Boom Swing System	
Type	Offset Boom w/ Hydraulic Cyl.
Swing Angle (L / R)	50°/80°
Hydraulic System	
Pressure	3550 psi
Hydraulic Flow	81 gpm
1st Line Max Auxiliary Flow	20 gpm
Dozer Blade	
Size	1' 8" x 7' 3"
Lift Above ground / Drop Below Ground	1' 4" / 1' 5"

KATO

EXCAVATORS AND TRACK LOADERS

www.KATOCES.com

400 Production Court

Elizabethtown, KY 42701

(800) 538-1447 | Fax: (270) 737-0419